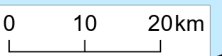
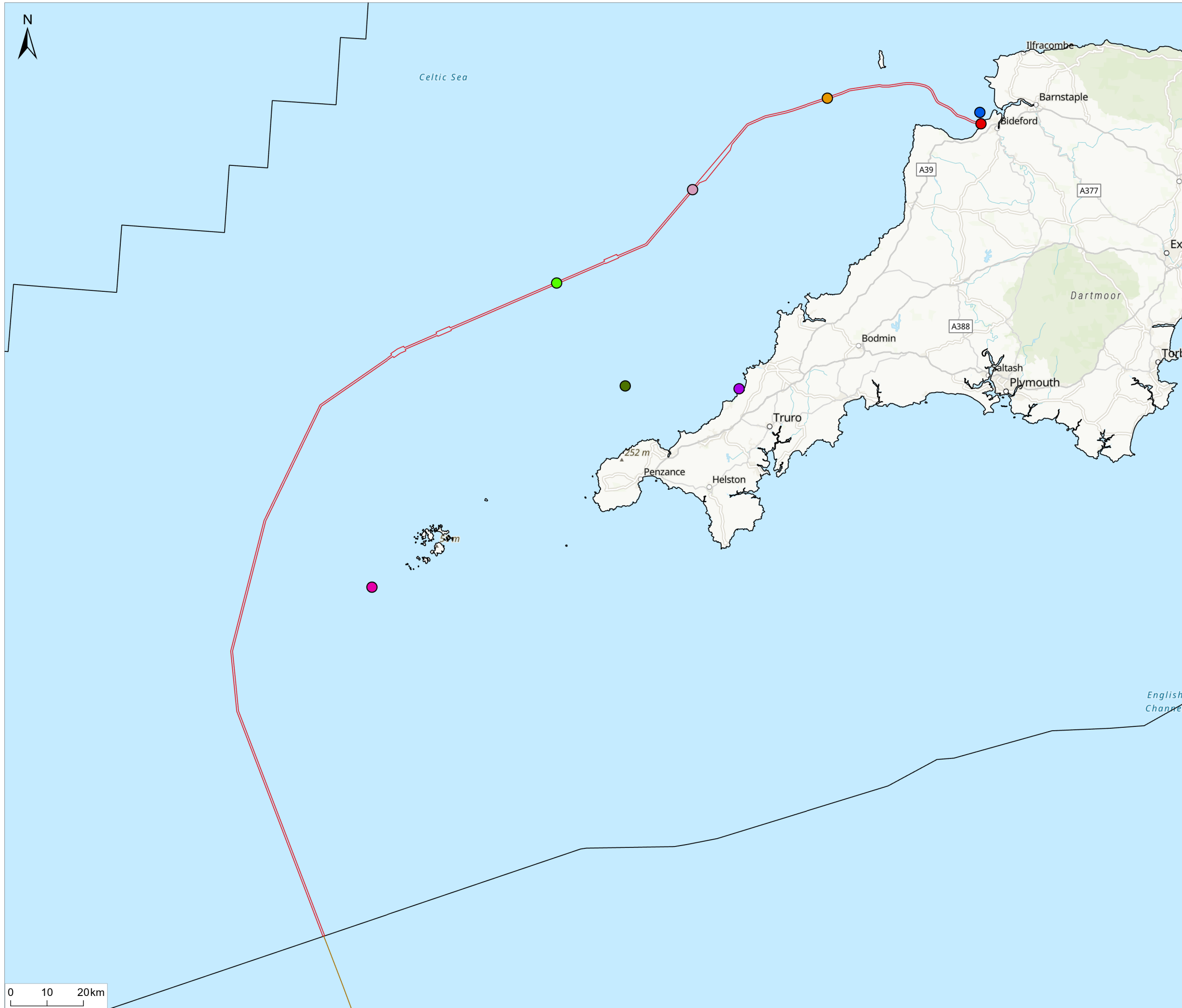
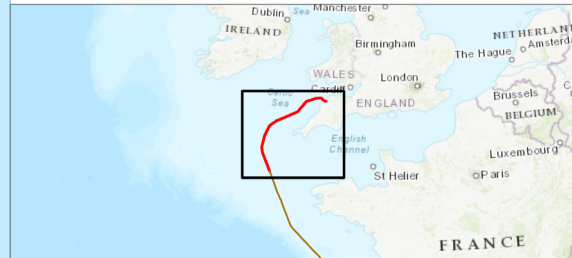


\\corp\uk\cloud\UK-GIS01\data\70107275 - Xlinks132_GIS\ArcGIS\Pro\Projects\Physical Processes\794-PLN-ESH-00084 - PP - 8 - Locations of Water Level Data.aprx



Notes
 1. This plan is scaled at paper size A3. If received electronically it is the recipient's responsibility to print to the correct scale. Only written dimensions should be used.

- Legend**
- UK Offshore Cable Corridor
 - Indicative Cable Centreline
 - UK Exclusive Economic Zone (EEZ)
- Wave Buoys (Measured)**
- Bideford Bay
 - Isles of Scilly
 - Perranporth
 - Wave Hub
- Water Level Data Modelled**
- Bideford Bay
 - Bristol Channel
 - North Cornwall Coast
 - SW Model Western Extent



P01	FINAL	PN	MB	Nov 2024
Rev	Description	By	CB	Date



Client Xlinks 1 Limited
 Project Xlinks' Morocco-UK Power Project
 Title Locations of Water Level Data

APFP Reg: 5(2)(a)

Status	Scale @ A3	Date Created
FINAL	1:1,000,000	Nov 2024
Figure Number		Rev
8.5		P01

www.xlinks.co